

REVECON 2.0 & 2.1 pro digital multi effect -short guide



Directive EC2004/108/EC



Digital Multi-effect REVECON 2.0 & 2.1 pro

Features:

- Low cost, high performance, digital multi-effects
- Superior sound quality, start-up delay time (no pops), clip indicator
- 16 built-in effects Reverb, Delay, Chorus, Flanger and combined

Effect programs:

- 24-bit, 96-kHz ADC/DAC
- Stereo input (L+Dmono), stereo output
- Low energy consumption, sps adapter included
- RoHS compliant standard, Pb-free

Applications:

- Electric and acoustic guitars amps, bass amps, synth amps
- Mixing consoles, DJ mixers, power audio mixing consoles
- Digital pianos, Electric pianos, combo organs
- Portable PA systems
- Vocal, speaker and karaoke systems



Description:

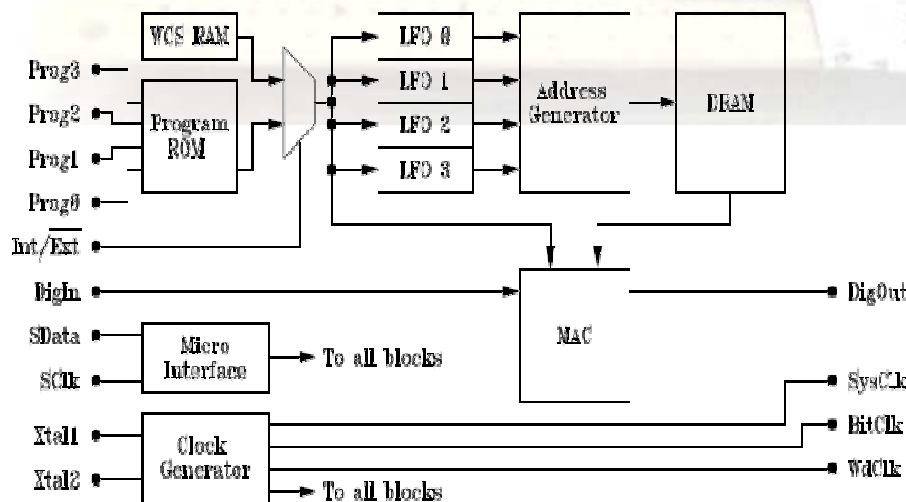
Revecon multi-effect offer programs including: Hall, Room, Plate, Delays, Choruses, Nonlinear Reverb and Rotary speaker.

Theory of operation:

DRE(Digital Reverb Engine) DSP architecture:

- DigIn/DigOut interface
- 16 x 128 location Program ROM
- 128 location Instruction (Writable Control Store - WCS) RAM
- 32768 location Data RAM
- Data RAM address generator
- 4 independent Low Frequency Oscillators (LFOs)
- Multiply/Accumulate (MAC) unit
- Instruction decoding and program control unit
- Microprocessor interface
- Clock generator

DRE architecture:



Detailed specifications DSP:

Recommended Operating Conditions				
Parameter	Min.	Typical	Max.	Unit
Source Impedance	-	-	<1	Ohm
Load Impedance	2k	10k	-	Ohm
Full Scale Input Level	3.8	4.0	4.2	Vpp
Full Scale Output Level	3.3	3.5	3.7	Vpp
5V Power supply voltage	4.75	5.0	5.25	V
5v Power supply current	-	115	133	mA

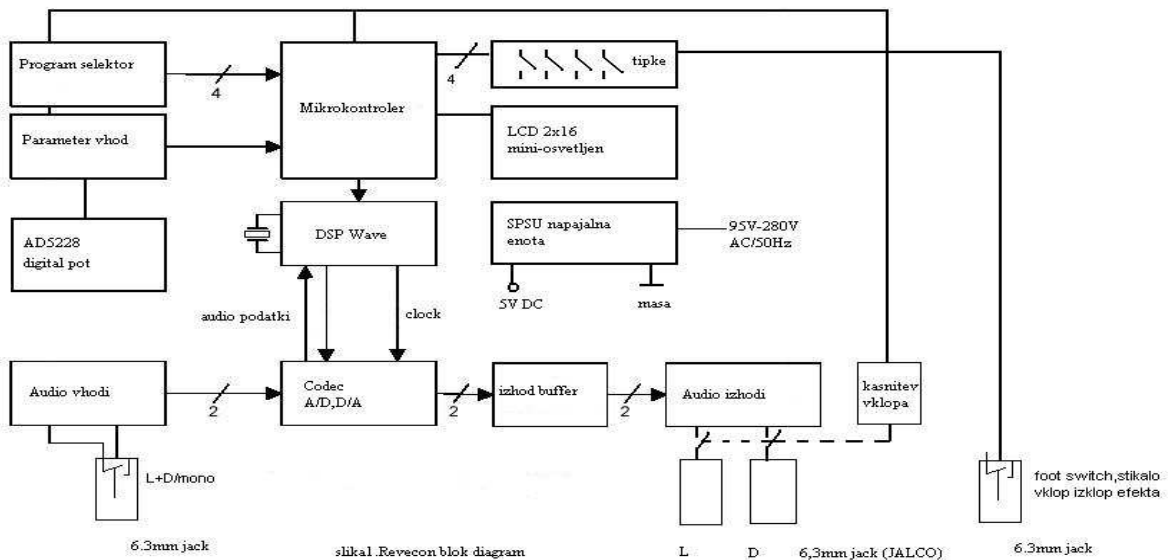
Absolute Maximum Ratings*				
Parameter	Min.	Typical	Unit	
Analogue Voltage Input Level	-0.3	5.3	V	
5V Power Supply	-0.3	5.3	V	
Operating Temperature	0	70	Deg C	

*Specifications are subject to change without notice

How to use:

Revecon controller or reverb effect is useful as an additive for vocals, instruments and other audio applications. Is also useful as an additive for guitar amplifiers and above all as the send-return connections for mixers and portable PA systems. Connection is a simple one mono input in the function of L + D, another plug the power switch effect. Two outputs (stereo), L and D is particularly important in programs delay and combined programs. It include 16 DSP programs, which are shown in the table in the following sections. For each effect can change parameter left and right keys in the duration of the reverb, room, plate programs and speed-repeat and volume of repetition in the program and delay combination. The last selected effect is stored and remains in eeprom even when switched off, as well as the selected parameter level. During the selection effects in the menu, you can skip the sequence of listed effects and choose the effect, according to your choice. During the time of 3-4 seconds when display flashing, the effect can be chosen, by set it up or down keys, when the blinking stops, you have the desired effect. Indicator of clip levels of the audio signal is the last character in the bottom row of LCD, when increase more than +6 dB.

Block diagram:



embedded projects:
www.audiologs.com

Key specifications AD/DA:

Parameter:	Typical:
Dynamic Range, SNR	97dB
THD+N	98dB
Frequency response (Fs=96kHz)	20Hz-20kHz, +/-1dB
Input level	2,5Vpp max
Output level	3,5Vpp max
Power supply	5V, 195mA

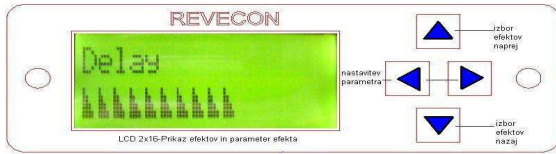
Program chart 2.0:

Program#	Program description	Parameter edit
1	Hall Reverb 1	Reverb Decay Time
2	Hall Reverb 2	Reverb Decay Time
3	Hall Reverb 3	Reverb Decay Time
4	Room Reverb 1	Reverb Decay Time
5	Room Reverb 2	Reverb Decay Time
6	Room Reverb 3	Reverb Decay Time
7	Plate Reverb 1	Reverb Decay Time
8	Plate Reverb 2	Reverb Decay Time
9	Plate Reverb 3	Reverb Decay Time
10	Nonlinear Reverb	Reverb Decay Time
11	Chorus	Chorus Depth
12	Flanger	Flanger Rate
13	Delay	Delay time
14	Chorus-Room	Reverb Decay Time
15	Chorus-Delay-Room	Delay Time
16	Rotary Speaker-Room	Rotary Speaker Speed

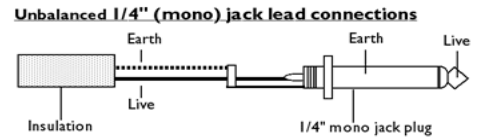
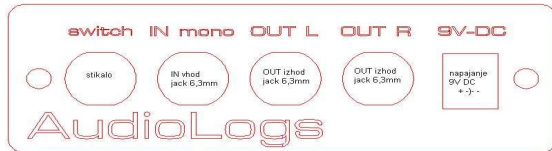
Program chart 2.1:

Program#	Program description	Parameter edit
1	Spring Reverb	Reverb Decay Time
2	Room Reverb	Reverb Decay Time
3	Hall Reverb	Reverb Decay Time
4	Slapback Reverb	Reverb Decay Time
5	Delay	Delay Time
6	Delay Reverb	Delay Time
7	Chorus	Chorus Depth
8	Chorus Reverb	Reverb Decay Time
9	Flanger	Flanger Rate
10	Phaser	Phaser Rate
11	LFO Wah	Wah Rate
12	Tremolo	Tremolo Rate
13	Reverb Tremolo	Tremolo Rate
14	Rotary Speaker	Rotay Speaker Speed
15	Rotary Speaker Reverb	Rotary Spekaer Speed
16	Octave	Octave Up/down

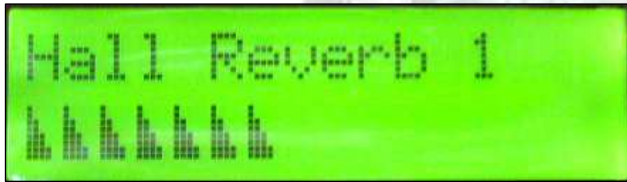
Keys selection of effects and parameter edit:



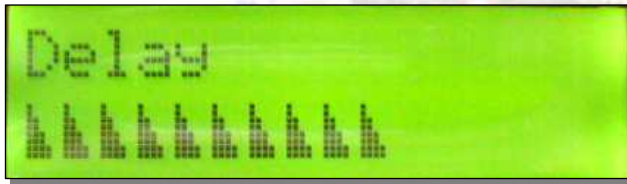
Connecting the cables rear panel:



LCD functions:



--
→ Setting the effect by pressing UP-DOWN

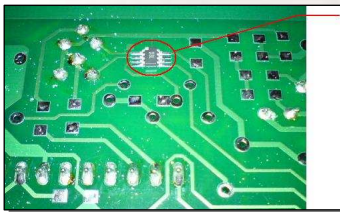


--
→ Setting parameter edit by pressing LEFT-RIGHT

ADAPTER:



Included adapter 100-240V AC/50-60Hz



Specialty is novelty use nanotechnology integrated circuits

AudioLogs DSP projects

Made in Slovenia

© 2009 AudioLogs s.p., • DSP programming: AudioLogs • firmware and pcb design: www.avr.4mg.com •